



**SLIDING HILLS**  
CHAROLAIS



**15TH ANNUAL BULL SALE**  
2:00PM • SATURDAY, MARCH 20, 2021 • CANORA SK



*Welcome* to our 15th Annual sale! Along with Mission Ridge Herefords we are very proud of the bulls on offer for 2021. We are pleased to have Transcon Livestock join us as our sales management team for this year, we look forward to working with them in the future.

Our focus has always been to raise a fertile productive cow herd. A 70 day breeding season has been our norm for many years. All AI and natural breeding dates are recorded which allows us to provide a gestation length for each calf born on our farm. Calving ease is of the utmost importance to us. Every calving is recorded and this info is included in the catalogue. Every calf is weighed within 12 hrs of birth, again at weaning, then again at yearling. This information is key to help us with important herd management decisions. We have added ultrasound data into the equation which provides us with another tool to compare sire groups within our program. This data is made available to our customers to help in their bull selection. We believe that this information will become more and more useful in the future. Every female receives a disposition score with in our herd. They all must maintain a respectable comfort level with us during calving and throughout the yearly routine.

The bulls will sell via video presentation so if at all possible we encourage you to view the bulls prior to the sale.

We would like to thank our customers for supporting our sale over the past 14 yrs. We have had the opportunity to meet and work with some outstanding producers which is what we love most about this business.

A special THANK YOU to our auctioneer Mike Fleury and ringman Clayton Hawreluik. Your enthusiasm and positive outlook of the livestock industry has always been a welcome addition. Also, THANK YOU to Larry Toner for once again working with us to provide insurance on sale day. Last but not least, THANK YOU to Mark and the crew at DLMS, year after year you provide an outstanding service that has become such an asset!

Looking forward to seeing you on the 20th.

## *The Weinbender's*

### SALE BULLS HEALTH PROGRAM

AT WEANING - *BoviShield One Shot & Ultrabac 7/Somubac*

MARCH 2021 - *Bovishield Gold, Ultrabac 7/Somubac, Anthrax Vaccine & Fusoguard (both initial & booster)*

**“Good friends  
are hard to find,  
harder to leave  
and impossible  
to forget.”**

*-G. Randolph*



Last October we lost our close friend Wayne. His kindness, humour and willingness to lend a hand are missed beyond words.

*Until our next “Fenske morning....”*



Carey, LeeAnn, Laura and Dale Weinbender

Box 1809, Canora, SK S0A 0L0 EMAIL: [clweinbender@gmail.com](mailto:clweinbender@gmail.com)  
P: 306-563-6678 C: 306-571-9035 [www.slidinghillcharolais.com](http://www.slidinghillcharolais.com)

# SLIDING HILLS CHAROLAIS | MISSION RIDGE HEREFORDS

## 15TH ANNUAL BULL SALE

**2:00 PM • SATURDAY, MARCH 20, 2021 • CANORA, SK**  
5 MILES SOUTH OF CANORA ON HWY 9, 1 MILE EAST AT THE BURGIS BEACH CORNER

### *Sale Day Phones*

Sliding Hills Charolais ..... 306-563-6678  
Carey Weinbender ..... 306-571-9035  
LeeAnn Weinbender ..... 306-571-9010  
Dale Weinbender ..... 306-571-9146  
James Hordos ..... 306-835-7492  
Sarah Hordos ..... 306-570-1717

### *Sale Staff*

Mike Fleury AUCTIONEER ..... 306-370-5022  
Clayton Hawreluik RINGMAN ..... 306-621-3824  
Jay Good TRANSCON ..... 403-556-5563  
Cody Haney TRANSCON ..... 403-559-8809  
Glenn Norton TRANSCON ..... 780-542-0634  
Darren Paget TRANSCON ..... 403-323-3985

### *Right to Draw Semen*

We reserve the right to draw semen on any of the sale bulls at our expense and the buyers convenience.

*\*Sliding Hills will retain 1/4 semen interest in all Charolais sale bulls.*

### *Can't make it to the sale?*



Watch & bid online at DLMS.ca. Please register to bid before the sale. **Mark Shologan 780-699-5082**

### *Video Sale*

All bulls are sold via video presentation. Please plan to view the bulls prior to the sale or come early sale day.

### *Delivery*

Cash rebate of \$100/buyer if you take your bull(s) home sale day. Delivery after May 1 will be \$100/buyer.

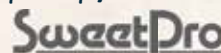
### *Insurance*

**Larry Toner Agencies ..... 306-834-7652**  
All bulls remaining at Sliding Hills/Mission Ridge must be insured.



Dairy Queen ice cream will be available again thank you to Mark and Lori Butchko, Yorkton, SK.

### *Sale Sponsor/Buyer Draws*



**Clayton Hawreluik 306-621-3824**

## *A note from Transcon Livestock*

Firstly, welcome to the Sliding Hills and Mission Ridge Bull Sale. Secondly let me say that I am so proud and happy to be able to help market the bulls for these wonderful people. I cannot get over what good friends they have become so fast.

The Weinbenders have a good selection of bulls to choose from. Expect to see some calving ease bulls to go along with the powerful bulls for your cows. Two of the calving ease bulls are the Aquarius and Parker bulls. The Aquarius calves are turning out to be highly sought after by breeders. After using Aquarius and seeing great results they went and bought a son, Parker. His calves are fluid moving and have a great body type. Some of the bull calves that really stood out during our tour were sired by Estrada, Veselka, Rave and High Class. Bulls with broad, long backs with thick square hips and profile nicely, walk around on big square feet in the huge pasture in the picturesque river valley of Sliding Hills. Make sure to read the pedigrees and foot notes and you'll see the emphasis put on cow families, and what a big deal the cow families are to the Weinbender family.

Mission Ridge brings us a very good lineup of Hereford bulls. Sarah, James and Troy Hordos are a young family that have a real passion for cattle, and it will be prominent when you view the Hereford offering. Their bulls are right for the times, providing you sound, gentle and well-balanced bulls providing calving ease and performance. Bringing the best pen of bulls that they have ever sold. Improving every year is a great sign of great breeders. Not willing to settle on quality, they seek only premier genetics and strive to improve, which is to your benefit.

They have used an assortment of sires; this includes three walking sire and two AI sires to help you find the perfect bull for your program. The qualities that stand out in my mind, are the straight wide tops and easy fleshing body type. I was very impressed with how quiet the bulls were as we walked though...a couple just had to be scratched. If you're looking for gentle quiet bulls, this is the sale for you.

These people are pleasant and easy to visit with, I know you are more than welcome... encouraged to show up ahead of time and go through the bulls in an environment where the hospitality is second to none. If you use google maps, punch in both farms and drive straight there to view the bulls. Please call our cell phones and take advantage of our highly regarded and confidential order buying services.

See ya down the cattle trail,

CODY C. HANEY



**VIDEOS, WEIGHTS AND SCROTAL MEASUREMENTS WILL BE AVAILABLE PRIOR TO THE SALE**

#### INDIVIDUAL INFORMATION

CALVING EASE	U
AGE OF DAM	2
GESTATION LENGTH	276

#### EXPECTED PROGENY DIFFERENCE

BW	WW	YW	MILK	TM
-4.2	34	69	26	43

#### ULTRASOUND DATA

MARB	B.FAT	REAin <sup>Δ</sup>	%LMY
3.80	4.45	15.13	66.50



**SHSH 4H**

**1**

## SHSH TRACTION 4H

HOMO POLLED | SHSH 4H | JAN 7, 2020 | MC787581

WINN MANS SKAGGS 663X  
SPARROWS AQUARIUS 493B  
SPARROWS ANGEL EYES 458X

MERIT 9809W  
SHSH ADELAINE 98F  
SHSH ADELAINE 27B

MD ALI TRADE U1059  
WINN MANS BEVERLY 663S  
SPARROWS ELDORADO 361L  
SPARROWS ANGEL EYES 458U  
HTA RHAPSODY 390N  
MERIT MISS LOIS 5028R  
LT LONG DISTANCE 9001 PLD  
SHSH ADELAINE 49Z

B.WT.  
76  
SEPT 5  
612

**2**

## SHSH GRIFFIN 11H

HOMO POLLED | SHSH 11H | JAN 14, 2020 | MC787589

WINN MANS SKAGGS 663X  
SPARROWS AQUARIUS 493B  
SPARROWS ANGEL EYES 458X

SHSH HOMETOWN 25D  
SHSH CALLIE 92F  
SHSH CALLIE 209Z

MD ALI TRADE U1059  
WINN MANS BEVERLY 663S  
SPARROWS ELDORADO 361L  
SPARROWS ANGEL EYES 458U  
WINN MANS LANZA 610S  
SHSH ADELAINE 27B  
LT WESTERN EDGE 4057 PLD  
SHSH CALLIE 35X

B.WT.  
104  
SEPT 5  
600



**SHSH 11H**

#### INDIVIDUAL INFORMATION

CALVING EASE	SA
AGE OF DAM	2
GESTATION LENGTH	283

#### EXPECTED PROGENY DIFFERENCE

BW	WW	YW	MILK	TM
0.4	38	88	26	45

#### ULTRASOUND DATA

MARB	B.FAT	REAin <sup>Δ</sup>	%LMY
3.80	3.86	14.49	66.58



SHSH 12H

INDIVIDUAL INFORMATION

CALVING EASE	U
AGE OF DAM	6
GESTATION LENGTH	279

EXPECTED PROGENY DIFFERENCE

BW	WW	YW	MILK	TM
-1.9	45	83	23	45

ULTRASOUND DATA

MARB	B.FAT	REA <sub>in</sub> <sup>Δ</sup>	%LMY
4.70	6.19	14.50	64.20

3

SHSH HIGH TIDE 12H

HORNED | SHSH 12H | JAN 24, 2020 | MC787590

WINN MANS LANZA 610S  
SHSH HIGH CLASS 43D  
SHSH MADONNA 21U

MERIT 9809W  
SHSH CALLIE 14B  
SHSH CALLIE 247Z

SPARROWS DURANGO 585P  
WINN MAN MERIT 036K  
SPARROWS SERENGETI 521N  
MNE MADONNA 7M  
HTA RHAPSODY 390N  
MERIT MISS LOIS 5028R  
EATONS ROYAL DYNASTY 6164  
SHSH CALLIE 607S

B.WT.  
95  
SEPT 5  
752

4

SHSH OUTER BANKS 13H

HOMO POLLED | SHSH 13H | JAN 25, 2020 | MC787591

SOS HOME GROWN 15C  
SOS VESELKA PLD 124E  
SOS BABY GIRL 21B

HVA REALTOR 1010B  
SHSH MADONNA 17D  
SHSH MADONNA 10A

WINN MANS CHAVEZ 826Y  
SOS SPRINGSIDE'S ADELE167  
CSS SIR NAVIGATOR 20Y  
FFBB MOMMASGIRL PLD 930W  
MERIT 8789U  
JMB MS MERIT 10X  
MXS VERMILLION 527R  
SHSH MADONNA 34T

B.WT.  
93  
SEPT 5  
682



SHSH 13H

INDIVIDUAL INFORMATION

CALVING EASE	U
AGE OF DAM	4
GESTATION LENGTH	277

EXPECTED PROGENY DIFFERENCE

BW	WW	YW	MILK	TM
-0.9	42	86	15	36

ULTRASOUND DATA

MARB	B.FAT	REA <sub>in</sub> <sup>Δ</sup>	%LMY
4.00	5.27	15.17	65.69

INDIVIDUAL INFORMATION		
CALVING EASE	U	
AGE OF DAM	8	
GESTATION LENGTH	278	

EXPECTED PROGENY DIFFERENCE					
BW	WW	YW	MILK	TM	
2.7	45	95	25	48	

ULTRASOUND DATA				
MARB	B.FAT	REAin^	%LMY	
3.30	5.27	15.20	65.71	



SHSH 18H

5

SHSH TYCOON 18H

POLLED/S | SHSH 18H | JAN 28, 2020 | MC787598

WINN MANS LANZA 610S

SHSH ESTRADA 31D

SHSH REBECCA 418B

EATONS ROYAL DYNASTY 6164

SHSH SUE 6Z

SHSH SUE 737T

SPARROWS DURANGO 585P

WINN MAN MERIT 036K

MERIT 9809W

MERIT REBECCA 4124P

EATONS VALUE ROYAL 2101P

EATONS MISS CADET 2899

SPARROWS SERENGETI 521N

SHSH SUE 365N

B.W.T.
117
SEPT 5
758

6

SHSH ATLAS 19H

HORNED | SHSH 19H | JAN 29, 2020 | MC787600

WINN MANS LANZA 610S

SHSH HOMETOWN 25D

SHSH ADELAINE 27B

LT BLUE BLOOD 1131 PLD

SHSH MS IMPRESS 26D

SHSH MS IMPRESS 66B

SPARROWS DURANGO 585P

WINN MAN MERIT 036K

LT LONG DISTANCE 9001 PLD

SHSH ADELAINE 49Z

LT BLUE VALUE 7903 ET

LT MOLLY 7122 PLD

HTA WHITEHOT 105A

SHSH MS IMPRESS 63S

B.W.T.
90
SEPT 5
674



SHSH 19H

INDIVIDUAL INFORMATION		
CALVING EASE	U	
AGE OF DAM	4	
GESTATION LENGTH	279	

EXPECTED PROGENY DIFFERENCE					
BW	WW	YW	MILK	TM	
-3.0	42	84	22	43	

ULTRASOUND DATA				
MARB	B.FAT	REAin^	%LMY	
3.30	4.76	15.37	66.37	



SHSH 23H

*Ranked*  
2ND AT YEARLING

INDIVIDUAL INFORMATION	
CALVING EASE	U
AGE OF DAM	4
GESTATION LENGTH	274

EXPECTED PROGENY DIFFERENCE				
BW	WW	YW	MILK	TM
-1.1	45	88	28	51

ULTRASOUND DATA			
MARB	B.FAT	REA <sub>in</sub> <sup>+</sup>	%LMY
3.50	2.92	16.15	68.89

7

## SHSH HAIRO 23H

HOMO POLLED | SHSH 23H | JAN 30, 2020 | MC787604

SPARROWS AQUARIUS 493B  
SPARROWS PARKER 806F  
SPARROWS LA QUINTA 10D

WC BENELLI 2134 P ET  
MEDONTE DEW DROP 10D  
MEDONTE XPECTATION 15X

WINN MANS SKAGGS 663X  
SPARROWS ANGEL EYES 458X  
WINN MANS LANZA 610S  
SPARROWS LA QUINTA 10W

DA PASSPORT 502 P ET  
JWK CLARICE J139 ET  
SVY FREEDOM PLD 307N  
SNAKE CREEK MISS 208M

B.WT.  
98  
SEPT 5  
750

8

## SHSH UPROAR 25H

TWIN | POLLED | SHSH 25H | JAN 31, 2020 | MC787606

HRJ CROWD FAVOURITE 515C  
SHSH RAVE 24E  
SHSH SERENADE 3A

EATONS ROYAL DYNASTY 6164  
SHSH CALLIE 247Z  
SHSH CALLIE 607S

SPARROWS KINGSTON 139Y  
HRJ MISS PARIS 7S  
EC NO DOUBT 2022P  
SHSH SERENADE 9Y

EATONS VALUE ROYAL 2101P  
EATONS MISS CADET 2899  
SPARROWS SERENGETI 521N  
SHSH CALLIE 16K

B.WT.  
84  
SEPT 5  
800

INDIVIDUAL INFORMATION	
CALVING EASE	U
AGE OF DAM	8
GESTATION LENGTH	274

EXPECTED PROGENY DIFFERENCE				
BW	WW	YW	MILK	TM
1.1	48	98	21	45

ULTRASOUND DATA			
MARB	B.FAT	REA <sub>in</sub> <sup>+</sup>	%LMY
4.50	5.24	14.90	65.50



SHSH 25H

### INDIVIDUAL INFORMATION

CALVING EASE	U
AGE OF DAM	3
GESTATION LENGTH	278

### EXPECTED PROGENY DIFFERENCE

BW	WW	YW	MILK	TM
-0.9	44	87	16	38

### ULTRASOUND DATA

MARB	B.FAT	REA <sub>in</sub> <sup>a</sup>	%LMY
4.00	3.81	13.71	66.00



SHSH 32H

9

## SHSH PACO 32H

POLLED | SHSH 32H | FEB 3, 2020 | MC787615

SOS HOME GROWN 15C  
SOS VESELKA PLD 124E  
SOS BABY GIRL 21B

HVA REALTOR 1010B  
SHSH SERENADE 15E  
SHSH SERENADE 21A

WINN MANS CHAVEZ 826Y  
SOS SPRINGSIDE'S ADELE167  
CSS SIR NAVIGATOR 20Y  
FFBB MOMMASGIRL PLD 930W  
MERIT 8789U  
JMB MS MERIT 10X  
SPARROWS BIRMINGHAM 758T  
MXS SERENADE 636S

B.WT.  
87  
SEPT 5  
638

10

## SHSH REWIND 39H

POLLED | SHSH 39H | FEB 5, 2020 | MC787620

SPARROWS AQUARIUS 493B  
SPARROWS PARKER 806F  
SPARROWS LA QUINTA 10D

MERIT 9809W  
SHSH MADONNA 5B  
SHSH MADONNA 14Z

WINN MANS SKAGGS 663X  
SPARROWS ANGEL EYES 458X  
WINN MANS LANZA 610S  
SPARROWS LA QUINTA 10W  
HTA RHAPSODY 390N  
MERIT MISS LOIS 5028R  
EATONS ROYAL DYNASTY 6164  
SHSH MADONNA 34T

B.WT.  
93  
SEPT 5  
728



SHSH 39H

### INDIVIDUAL INFORMATION

CALVING EASE	U
AGE OF DAM	6
GESTATION LENGTH	284

### EXPECTED PROGENY DIFFERENCE

BW	WW	YW	MILK	TM
-3.9	44	81	24	45

### ULTRASOUND DATA

MARB	B.FAT	REA <sub>in</sub> <sup>a</sup>	%LMY
3.50	3.81	14.72	66.82



SHSH 40H

INDIVIDUAL INFORMATION	
CALVING EASE	U
AGE OF DAM	14
GESTATION LENGTH	280

EXPECTED PROGENY DIFFERENCE				
BW	WW	YW	MILK	TM
0.3	40	84	24	44

ULTRASOUND DATA			
MARB	B.FAT	REA <sub>in</sub> <sup>a</sup>	%LMY
3.70	5.71	15.71	65.67

11

SHSH LAST CALL 40H

POLLED | SHSH 40H | FEB 5, 2020 | RMC787621

- HRJ CROWD FAVOURITE 515C
- SHSH RAVE 24E
- SHSH SERENADE 3A
- SPARROWS SERENGETI 521N
- SHSH CALLIE 607S
- SHSH CALLIE 16K

- SPARROWS KINGSTON 139Y
- HRJ MISS PARIS 75
- EC NO DOUBT 2022P
- SHSH SERENADE 9Y
- ABC LATORO 263G
- SPARROWS SECURITY 621H
- HTA POLLED HARVEST 436D
- SHSH CALLIE 714G

B.WT.
97
SEPT 5
664

12

SHSH CHASNYK 42H

HORNED | SHSH 42H | FEB 6, 2020 | MC787623

- SOS HOME GROWN 15C
- SOS VESELKA PLD 124E
- SOS BABY GIRL 21B
- WINN MANS LANZA 610S
- SHSH SERENADE 16D
- SHSH SERENADE 12B

- WINN MANS CHAVEZ 826Y
- SOS SPRINGSIDE'S ADELE167
- CSS SIR NAVIGATOR 20Y
- FFBB MOMMASGIRL PLD 930W
- SPARROWS DURANGO 585P
- WINN MAN MERIT 036K
- MERIT 9809W
- MXS SERENADE 636S

B.WT.
88
SEPT 5
726

INDIVIDUAL INFORMATION	
CALVING EASE	U
AGE OF DAM	4
GESTATION LENGTH	284

EXPECTED PROGENY DIFFERENCE				
BW	WW	YW	MILK	TM
-3.2	39	81	20	40

ULTRASOUND DATA			
MARB	B.FAT	REA <sub>in</sub> <sup>a</sup>	%LMY
4.60	3.86	15.56	67.45



SHSH 42H

#### INDIVIDUAL INFORMATION

CALVING EASE	U
AGE OF DAM	5
GESTATION LENGTH	284

#### EXPECTED PROGENY DIFFERENCE

BW	WW	YW	MILK	TM
3.7	52	106	20	46

#### ULTRASOUND DATA

MARB	B.FAT	REAin <sup>o</sup>	%LMY
4.50	6.19	15.09	64.69



**SHSH 43H**

**13**

## SHSH FAME 43H

HOMO POLLED | SHSH 43H | FEB 6, 2020 | MC787624

- HRJ CROWD FAVOURITE 515C
- SHSH RAVE 24E**
- SHSH SERENADE 3A
- CEDARLEA HERITAGE 11A
- SHSH SUE 29C**
- SHSH SUE 6Z

- SPARROWS KINGSTON 139Y
- HRJ MISS PARIS 7S
- EC NO DOUBT 2022P
- SHSH SERENADE 9Y
- SOS POLLED DETONATOR 8M
- CEDARLEA GLITTER 36Y
- EATONS ROYAL DYNASTY 6164
- SHSH SUE 737T

B.W.T.
113
SEPT 5
708

**14**

## SHSH ORION 46H

HOMO POLLED | SHSH 46H | FEB 7, 2020 | MC787628

- WINN MANS SKAGGS 663X
- SPARROWS AQUARIUS 493B**
- SPARROWS ANGEL EYES 458X
- MERIT 9809W
- SHSH REBECCA 418B**
- MERIT REBECCA 4124P

- MD ALI TRADE U1059
- WINN MANS BEVERLY 663S
- SPARROWS ELDORADO 361L
- SPARROWS ANGEL EYES 458U
- HTA RHAPSODY 390N
- MERIT MISS LOIS 5028R
- MERIT 1058L
- MERIT REBECCA 9035J

B.W.T.
118
SEPT 5
785



**SHSH 46H**

*Ranked*  
2ND AT WEANING

#### INDIVIDUAL INFORMATION

CALVING EASE	U
AGE OF DAM	6
GESTATION LENGTH	283

#### EXPECTED PROGENY DIFFERENCE

BW	WW	YW	MILK	TM
2.1	47	95	24	48

#### ULTRASOUND DATA

MARB	B.FAT	REAin <sup>o</sup>	%LMY
3.60	3.81	14.38	66.54



SHSH 49H

*Ranked*  
3RD AT YEARLING

INDIVIDUAL INFORMATION	
CALVING EASE	U
AGE OF DAM	7
GESTATION LENGTH	286

EXPECTED PROGENY DIFFERENCE				
BW	WW	YW	MILK	TM
1.0	44	88	27	49

ULTRASOUND DATA			
MARB	B.FAT	REA <sub>in</sub> <sup>6</sup>	%LMY
5.00	6.19	16.52	65.85

15

SHSH CAPACITY 49H

POLLED | SHSH 49H | FEB 10, 2020 | MC787632

WINN MANS LANZA 610S  
SHSH ESTRADA 31D  
SHSH REBECCA 418B

SPARROWS BIRMINGHAM 758T  
SHSH SERENADE 21A  
MXS SERENADE 636S

SPARROWS DURANGO 585P  
WINN MAN MERIT 036K  
MERIT 9809W  
MERIT REBECCA 4124P

ABC LATORO 263G  
SPARROWS JOSIE 13P  
SOS POLLED DETONATOR 8M  
MXS ESPEON 122L

B.WT.
111
SEPT 5
722

16

SHSH ARMOR 54H

POLLED | SHSH 54H | FEB 11, 2020 | MC787635

SOS HOME GROWN 15C  
SOS VESELKA PLD 124E  
SOS BABY GIRL 21B

HVA REALTOR 1010B  
SHSH SERENADE 48D  
SHSH SERENADE 3A

WINN MANS CHAVEZ 826Y  
SOS SPRINGSIDE'S ADELE167  
CSS SIR NAVIGATOR 20Y  
FFBB MOMMASGIRL PLD 930W

MERIT 8789U  
JMB MS MERIT 10X  
EC NO DOUBT 2022P  
SHSH SERENADE 9Y

B.WT.
110
SEPT 5
706

INDIVIDUAL INFORMATION	
CALVING EASE	U
AGE OF DAM	4
GESTATION LENGTH	283

EXPECTED PROGENY DIFFERENCE				
BW	WW	YW	MILK	TM
1.6	49	97	15	40

ULTRASOUND DATA			
MARB	B.FAT	REA <sub>in</sub> <sup>6</sup>	%LMY
3.60	2.46	14.57	68.08



SHSH 54H

INDIVIDUAL INFORMATION	
CALVING EASE	U
AGE OF DAM	9
GESTATION LENGTH	271

EXPECTED PROGENY DIFFERENCE					
BW	WW	YW	MILK	TM	
-2.4	42	81	26	47	

ULTRASOUND DATA				
MARB	B.FAT	REAin^	%LMY	
4.50	6.22	13.94	63.72	



SHSH 55H

17

SHSH GANNON 55H

HOMO POLLED | SHSH 55H | FEB 11, 2020 | MC787636

- SPARROWS AQUARIUS 493B
- SPARROWS PARKER 806F
- SPARROWS LA QUINTA 10D
- MERIT 9809W
- SHSH SERENADE 9Y
- MXS SERENADE 636S

- WINN MANS SKAGGS 663X
- SPARROWS ANGEL EYES 458X
- WINN MANS LANZA 610S
- SPARROWS LA QUINTA 10W
- HTA RHAPSODY 390N
- MERIT MISS LOIS 5028R
- SOS POLLED DETONATOR 8M
- MXS ESPEON 122L

B.W.T.
93
SEPT 5
694

18

SHSH HEXTON 61H

POLLED | SHSH 61H | FEB 12, 2020 | MC787641

- WINN MANS LANZA 610S
- SHSH HIGH CLASS 43D
- SHSH MADONNA 21U
- SPARROWS BIRMINGHAM 758T
- SHSH REBECCA 74Z
- MERIT REBECCA 4124P

- SPARROWS DURANGO 585P
- WINN MAN MERIT 036K
- SPARROWS SERENGETI 521N
- MNE MADONNA 7M
- ABC LATORO 263G
- SPARROWS JOSIE 13P
- MERIT 1058L
- MERIT REBECCA 9035J

B.W.T.
102
SEPT 5
682



SHSH 61H

INDIVIDUAL INFORMATION	
CALVING EASE	U
AGE OF DAM	8
GESTATION LENGTH	288

EXPECTED PROGENY DIFFERENCE					
BW	WW	YW	MILK	TM	
1.2	46	86	23	46	

ULTRASOUND DATA				
MARB	B.FAT	REAin^	%LMY	
3.50	3.39	15.09	67.55	



SHSH 62H

INDIVIDUAL INFORMATION	
CALVING EASE	U
AGE OF DAM	13
GESTATION LENGTH	271

EXPECTED PROGENY DIFFERENCE				
BW	WW	YW	MILK	TM
-1.7	37	77	23	42

ULTRASOUND DATA			
MARB	B.FAT	REAin^	%LMY
4.20	3.39	14.45	67.03

19

SHSH TONTO 62H

TWIN | POLLED/S | SHSH 62H | FEB 12, 2020 | MC787644

WINN MANS SKAGGS 663X  
SPARROWS AQUARIUS 493B  
SPARROWS ANGEL EYES 458X

SHELCO MADE EASY 512R  
STAUFFERS MISS CARLO 94U  
STAUFFERS MS CARLO 41M

MD ALI TRADE U1059  
WINN MANS BEVERLY 663S  
SPARROWS ELDORADO 361L  
SPARROWS ANGEL EYES 458U

MOORE'S LEGACY 117L  
SHELCO DOLL 311N  
HTA WHITEHOT 105A  
SRL MS CARLO 2B

B.WT.
73
SEPT 5
585

20

SHSH RIPTIDE 63H

TWIN | HOMO POLLED | SHSH 63H | FEB 12, 2020 | MC787646

WINN MANS SKAGGS 663X  
SPARROWS AQUARIUS 493B  
SPARROWS ANGEL EYES 458X

SHELCO MADE EASY 512R  
STAUFFERS MISS CARLO 94U  
STAUFFERS MS CARLO 41M

MD ALI TRADE U1059  
WINN MANS BEVERLY 663S  
SPARROWS ELDORADO 361L  
SPARROWS ANGEL EYES 458U

MOORE'S LEGACY 117L  
SHELCO DOLL 311N  
HTA WHITEHOT 105A  
SRL MS CARLO 2B

B.WT.
76
SEPT 5
680

INDIVIDUAL INFORMATION	
CALVING EASE	U
AGE OF DAM	13
GESTATION LENGTH	271

EXPECTED PROGENY DIFFERENCE				
BW	WW	YW	MILK	TM
-1.7	37	77	23	42

ULTRASOUND DATA			
MARB	B.FAT	REA	%LMY
3.60	3.86	16.70	68.38



SHSH 63H

*Ranked*

1ST AT WEANING  
1ST AT YEARLING

INDIVIDUAL INFORMATION

CALVING EASE	U
AGE OF DAM	3
GESTATION LENGTH	283

EXPECTED PROGENY DIFFERENCE

BW	WW	YW	MILK	TM
1.1	54	106	22	49

ULTRASOUND DATA

MARB	B.FAT	REA <sub>in</sub> <sup>+</sup>	%LMY
3.90	4.33	16.24	67.52



SHSH 75H

21

SHSH HARLAN 75H

HOMO POLLED | SHSH 75H | FEB 18, 2020 | MC787658

SPARROWS AQUARIUS 493B  
SPARROWS PARKER 806F  
SPARROWS LA QUINTA 10D

HVA REALTOR 1010B  
SHSH CALLIE 93E  
SHSH CALLIE 64B

WINN MANS SKAGGS 663X  
SPARROWS ANGEL EYES 458X  
WINN MANS LANZA 610S  
SPARROWS LA QUINTA 10W  
MERIT 8789U  
JMB MS MERIT 10X  
MERIT 9809W  
SHSH CALLIE 813U

B.W.T.  
110  
SEPT 5  
708

22

SHSH HYDE 77H

POLLED | SHSH 77H | FEB 21, 2020 | MC787660

SOS HOME GROWN 15C  
SOS VESELKA PLD 124E  
SOS BABY GIRL 21B

EATONS ROYAL DYNASTY 6164  
SHSH REESE 33D  
SHSH REESE 41R

WINN MANS CHAVEZ 826Y  
SOS SPRINGSIDE'S ADELE167  
CSS SIR NAVIGATOR 20Y  
FFBB MOMMAGIRL PLD 930W  
EATONS VALUE ROYAL 2101P  
EATONS MISS CADET 2899  
SPARROWS SERENGETI 521N  
SHSH REESE 12L

B.W.T.  
118  
SEPT 5  
700



SHSH 77H

INDIVIDUAL INFORMATION

CALVING EASE	U
AGE OF DAM	4
GESTATION LENGTH	285

EXPECTED PROGENY DIFFERENCE

BW	WW	YW	MILK	TM
4.2	51	99	15	40

ULTRASOUND DATA

MARB	B.FAT	REA <sub>in</sub> <sup>+</sup>	%LMY
4.10	5.27	14.92	65.48



SHSH 84H

INDIVIDUAL INFORMATION	
CALVING EASE	U
AGE OF DAM	6
GESTATION LENGTH	279

EXPECTED PROGENY DIFFERENCE				
BW	WW	YW	MILK	TM
-4.5	45	88	28	50

ULTRASOUND DATA			
MARB	B.FAT	REA <sub>in</sub> <sup>^</sup>	%LMY
3.90	5.24	16.99	67.20

23

SHSH MERCHANT 84H

HOMO POLLED | SHSH 84H | FEB 24, 2020 | MC787666

- SPARROWS AQUARIUS 493B

SPARROWS PARKER 806F

SPARROWS LA QUINTA 10D
- LT LONG DISTANCE 9001 PLD

SHSH ADELAINE 27B

SHSH ADELAINE 49Z

- WINN MANS SKAGGS 663X
- SPARROWS ANGEL EYES 458X
- WINN MANS LANZA 610S
- SPARROWS LA QUINTA 10W
- LT SILVER DISTANCE 5342P
- LT BELLE 7026 P
- EATONS ROYAL DYNASTY 6164
- SHSH ADLAINE 28M

B.WT.
94
SEPT 5
710

24

SHSH PAXTON 87H

HORNED | SHSH 87H | FEB 25, 2020 | MC787668

- SPARROWS AQUARIUS 493B

SPARROWS PARKER 806F

SPARROWS LA QUINTA 10D
- EATONS ROYAL DYNASTY 6164

SHSH SUE 410B

SHSH SUE 365N

- WINN MANS SKAGGS 663X
- SPARROWS ANGEL EYES 458X
- WINN MANS LANZA 610S
- SPARROWS LA QUINTA 10W
- EATONS VALUE ROYAL 2101P
- EATONS MISS CADET 2899
- HTA FIREBALL 128L
- SHSH SUE 65K

B.WT.
110
SEPT 5
718

*Ranked*  
3RD AT WEANING

INDIVIDUAL INFORMATION	
CALVING EASE	U
AGE OF DAM	6
GESTATION LENGTH	280

EXPECTED PROGENY DIFFERENCE				
BW	WW	YW	MILK	TM
1.8	51	101	25	50

ULTRASOUND DATA			
MARB	B.FAT	REA <sub>in</sub> <sup>^</sup>	%LMY
4.00	5.71	15.42	65.44



SHSH 87H

INDIVIDUAL INFORMATION		
CALVING EASE	U	
AGE OF DAM	8	
GESTATION LENGTH	274	

EXPECTED PROGENY DIFFERENCE					
BW	WW	YW	MILK	TM	
-0.6	48	98	27	51	

ULTRASOUND DATA				
MARB	B.FAT	REAin <sup>^</sup>	%LMY	
3.70	6.19	14.83	64.47	



SHSH 95H

25

SHSH HOMELAND 95H

HOMO POLLED | SHSH 95H | MAR 5, 2020 | MC787672

- WINN MANS LANZA 610S  
 SHSH HOMETOWN 25D  
 SHSH ADELAINE 27B
- LT WESTERN EDGE 4057 PLD  
 SHSH CALLIE 209Z  
 SHSH CALLIE 35X

- SPARROWS DURANGO 585P  
 WINN MAN MERIT 036K  
 LT LONG DISTANCE 9001 PLD  
 SHSH ADELAINE 49Z
- LT WESTERN SPUR 2061 PLD  
 LT DUCHESS OF MAC 7076 P  
 SPARROWS SERENGETI 521N  
 SHSH CALLIE 950J

B.W.T.
103
SEPT 5
670

26

SHSH PAVATI 97H

POLLED | SHSH 97H | MAR 7, 2020 | MC787673

- SPARROWS AQUARIUS 493B  
 SPARROWS PARKER 806F  
 SPARROWS LA QUINTA 10D
- STAUFFERS EASY GUIDER PLD 112X  
 SHSH LAURA 70C  
 SHSH LAURA 30Z

- WINN MANS SKAGGS 663X  
 SPARROWS ANGEL EYES 458X  
 WINN MANS LANZA 610S  
 SPARROWS LA QUINTA 10W
- SHELCO MADE EASY 512R  
 SFL 5G MISS JAMIE 41L  
 SPARROWS BIRMINGHAM 758T  
 SHSH LAURA 12M

B.W.T.
98
SEPT 5
662



SHSH 97H

INDIVIDUAL INFORMATION		
CALVING EASE	U	
AGE OF DAM	5	
GESTATION LENGTH	285	

EXPECTED PROGENY DIFFERENCE					
BW	WW	YW	MILK	TM	
0.3	50	96	23	48	

ULTRASOUND DATA				
MARB	B.FAT	REAin <sup>^</sup>	%LMY	
3.80	4.80	15.37	66.34	



SHSH 99H

INDIVIDUAL INFORMATION

CALVING EASE	U
AGE OF DAM	7
GESTATION LENGTH	280

EXPECTED PROGENY DIFFERENCE

BW	WW	YW	MILK	TM
-1.3	45	80	17	40

ULTRASOUND DATA

MARB	B.FAT	REA <sub>in</sub> <sup>a</sup>	%LMY
4.20	3.33	12.54	65.53

27

SHSH HUSTLER 99H

POLLED | SHSH 99H | MAR 11, 2020 | MC787675

SOS HOME GROWN 15C  
SOS VESELKA PLD 124E  
SOS BABY GIRL 21B

MERIT 9809W  
SHSH CALLIE 379A  
SHSH CALLIE 607S

WINN MANS CHAVEZ 826Y  
SOS SPRINGSIDE'S ADELE167  
CSS SIR NAVIGATOR 20Y  
FFBB MOMMASGIRL PLD 930W

HTA RHAPSODY 390N  
MERIT MISS LOIS 5028R  
SPARROWS SERENGETI 521N  
SHSH CALLIE 16K

B.WT.  
93  
SEPT 5  
626



CANADIAN CHAROLAIS ASSOCIATION  
SCHOLARSHIPS

If you are walking a registered Charolais bull, your children may be eligible to apply for scholarships available through the CCA. Applicants must be involved in agriculture and registered in a post-secondary education college or university program. More information and the application forms are available at [www.charolais.com](http://www.charolais.com)



SHSH 39H with dam

# REFERENCE SIRE S



WALKING SIRE

## SPARROWS PARKER 806F

POLLED | SB 806F | JAN 13, 2018 | MC756869

sire WINN MANS SKAGGS 663X  
SPARROWS AQUARIUS 493B  
dam SPARROWS LA QUINTA 10D  
SPARROWS LA QUINTA 10W

### EXPECTED PROGENY DIFFERENCE

BW	WW	YW	MILK	TM
-2.9	46	99	27	51

- high seller for CK Sparrow Farms in their 2019 Bull Sale
- owned with Johnston Charolais
- used to add hair, and length
- large footed and free moving
- excellent disposition



WALKING SIRE

## SOS VESELKA PLD 124E

POLLED | SOS 124E | FEBRUARY 02 2017 | PMC732593

sire WINN MANS CHAVEZ 826Y  
SOS HOME GROWN 15C  
dam CSS SIR NAVIGATOR 20Y  
SOS BABY GIRL 21B  
SOS SPRINGSIDE'S ADELE167  
FFBB MOMMAGIRL PLD 930W

### EXPECTED PROGENY DIFFERENCE

BW	WW	YW	MILK	TM
1.4	45	87	12	35

- high seller for Springside Farms at their 2018 bull sale
- owned with Sandan Charolais
- used to add hair, hip, and body
- great disposition



AI SIRE

## SPARROWS AQUARIUS 493B

POLLED | MARCH 26 2014 | PMC360365

sire WINN MANS SKAGGS 663X  
dam SPARROWS ANGEL EYES 458X

### EXPECTED PROGENY DIFFERENCE

BW	WW	YW	MILK	TM
-1.8	36	87	26	44

- used successfully on heifers
- excellent foot and leg structure
- used to add hair, body and muscle



AI SIRE

## SHSH RAVE 24E

POLLED | JAN 30, 2017 | MC724144

sire HRJ CROWD FAVOURITE 515C  
dam SHSH SERENADE 3A

### EXPECTED PROGENY DIFFERENCE

BW	WW	YW	MILK	TM
2.2	53	106	22	49

- second high seller in 2018 sale to Circle Cee Charolais/Thurston Charolais
- homo polled • great disposition
- big bodied, rib shape, full of red meat
- first daughters have calved with excellent udders



AI SIRE

## SHSH HIGH CLASS 43D

POLLED | FEBRUARY 04 2016 | PMC701847

sire WINN MANS LANZA 610S  
dam SHSH MADONNA 21U

### EXPECTED PROGENY DIFFERENCE

BW	WW	YW	MILK	TM
0.5	45	88	27	49

- maternal brother to SHSH HD 14Y
- high selling bull in our 2017 sale to HTA Charolais
- excellent footed with increased length of body

For a full list of reference sires please visit our website.

# REFERENCE DAMS



SHSH 3A - GRANDDAM OF 54H



SHSH 5B - DAM OF 39H



XAL 10D - DAM OF 23H



SHSH 16D - DAM OF 42H



SHSH 27B - DAM OF 84H & MGD OF 4H



SHSH 29C - DAM OF 43H



SHSH 49Z - MGD OF 84H



SHSH 64B - MGD OF 75H



SHSH 247Z - DAM OF 25H



SHSH 410B - DAM OF 85H



SHSH 418B - DAM OF 46H



SLL 94U - DAM OF 62H & 63H



## *Welcome!*

We would like to welcome everyone to the 15th annual Sliding Hills Charolais and Mission Ridge Herefords Bull Sale.

First of all we would like to thank our past buyers and bidders of our previous sales. We enjoy hearing from everyone and we strive to breed these bulls the very best we can for your success and satisfaction!

Again this year we would like to thank Carey, LeeAnn, Laura and Dale for all the hard work and preparation they put in to make this sale run smoothly. We always love working together with the Weinbender's and appreciate everything they do for us.

As we reflect on 2020 we are thankful for the agriculture industry and those who have also passionately chosen this way of life. Now more than ever it is important to push forward and continue to provide safe and nutritious food that we always have. As 2020 rolled on we are very fortunate to be able to wake up each day and farm here with our family. Although we may have missed out on many events where we catch up with friends and customers that make our year memorable, being able to continue doing what we love, and spend time with those closest to us made it feel like any other year.

New for this year, we would like to welcome Transcon Livestock who are joining us as our sales management team. We look forward to working together to build on what this sale is and move into the future.

We are proud to present to everyone our 2021 bull sale offering. The bulls on offer this year are a group that we feel very confident in. These calves are backed by carefully selected breeding decisions to bring our cowherd to where it is today. Mother cows with **structure and soundness, adequate milk and udder composition, fertility** have been traits we have worked with to improve our females year after year. We have been working to tighten up our calving season, moving to a **70 day breeding period**. This has allowed us to retain the females with the highest fertility moving forward. We have begun to incorporate some flushing and embryo work here in hopes to push forward progress in our calf crop. We plan to continue utilizing this technology to focus on mating our high producing females to bulls that give us some elevated genetics to build upon.

The bull calves were weaned off **without any creep**. After weaning the bull calves were penned together and have been managed as one group. They have been developed on a high fibre, soy based pellet with free choice grass/alfalfa hay and a complementary mineral program. The bulls have access to a large corral which has allowed for adequate exercise and overall growth and development. As you read the catalogue, you will notice many data points and records printed to help paint the picture of each lot. We rely on records and data to aid us in helping make breeding and management decisions on our operation and we want to make this information readily available to our customers. You can expect **accurate and honest weights from birth to yearling** as well as additional data points like carcass characteristics gathered via ultrasound and calving ease details recorded at time of birth.

We enjoy seeing our customers succeed with incorporating the Hereford breed into their programs. Calves that are easy to manage, and highly feed efficient can bring back dividends in the fall. Hereford cross females are exceptionally maternal and make excellent replacements that will increase herd longevity. The excitement around the Hereford breed is building and we are excited to be apart of it. .

We look forward to seeing you on the 20th.

Sincerely,

*The Hordos'*

### SALE BULLS HEALTH PROGRAM

AT WEANING - *BoviShield One Shot & Ultrabac 7/Somubac*

MARCH 2021 - *Fusoguard (both initial & booster)*



### THE HORDOS FAMILY

Box 12, Raymore, SK S0A 3J0

James Cell: 306-835-7492

EMAIL [info@missionridgeherefords.com](mailto:info@missionridgeherefords.com)

WEBSITE [www.missionridgeherefords.com](http://www.missionridgeherefords.com)



APKO 8H

INDIVIDUAL INFORMATION	
CALVING EASE	U
AGE OF DAM	4
GESTATION LENGTH	290

EXPECTED PROGENY DIFFERENCE					
CE	BW	WW	YW	MILK	TM
-5.7	6.2	57.2	86.5	17.5	46.1

ULTRASOUND DATA			
MARB	B.FAT	REA <sub>in</sub> <sup>^</sup>	%LMY
4.30	9.07	14.28	61.09

**28**      **M-R 475Z STOCKMAN 8H**  
HOMO POLLED | APKO 8H | JAN 23, 2020 | C03072270

TH 223 71I VICTOR 755T  
TH 89T 755T STOCKMAN 475Z  
TH 16G 20N GEMINI 89T  
WLB WINCHESTER POWERBALL 27A  
M-R 27A DOTTIE 52D  
M-R 611Y STAN HUNTRESS 52B

DRF JWR PRINCE VICTOR 71I  
KBCR 19D DOMINETTE 223  
NPH 20X SPARTAN 20N  
TEE-JAY 707B GEMINI ET 16G  
WLB LEGO 83T 90X  
WLB 503W ALICE ET 8401Y  
BIG-GULLY 611 STAN HUNTER 611Y  
MR MISS 85L UNTOUCHABLE 15U

B.WT.
106
SEPT 30
733

**29**      **M-R 118U HOME RUN 16H**  
POLLED | APKO 16H | JAN 28, 2020 | C03072555

BNMHPH 13P HEAT 101S  
MHPH 101S UMPIRE 118U  
MHPH MS 68M NITA 1112R  
WLB BAR CODE 4002X 116A  
M-R 116A 12R DECODE 23C  
M-R MISS SANDSTAR 12R

REMITALL PATRIOT ET 13P  
ANL PBG 29F BONNIE 21P  
STAR AMERICA BNMHPH SS MKS 68M  
MHPH MS 29F NITA 112L  
WLB BINGO 50S ET 4002X  
WLB 10H MARY ET 450U  
WABASH 108 SANDMAN 85L  
M-R 921 MISS HEAVY DUTY 21F

B.WT.
102
SEPT 30
758

INDIVIDUAL INFORMATION	
CALVING EASE	U
AGE OF DAM	5
GESTATION LENGTH	288

EXPECTED PROGENY DIFFERENCE					
CE	BW	WW	YW	MILK	TM
-2.4	4.8	49.2	81.1	19.5	44.1

ULTRASOUND DATA			
MARB	B.FAT	REA <sub>in</sub> <sup>^</sup>	%LMY
4.40	10.02	13.34	59.35



APKO 16H

*Ranked*  
1ST AT WEANING

INDIVIDUAL INFORMATION

CALVING EASE	U
AGE OF DAM	5
GESTATION LENGTH	285

EXPECTED PROGENY DIFFERENCE

CE	BW	WW	YW	MILK	TM
-2.1	4.0	56.9	91.7	30.6	59.1

ULTRASOUND DATA

MARB	B.FAT	REA <sub>in</sub> <sup>^</sup>	%LMY
4.30	4.76	12.27	63.85



APKO 18H

30

M-R 100W ENTRUST 18H

POLLED | APKO 18H | JAN 29, 2020 | C03072334

KCF BENNETT 3008 M326  
NJW 73S M326 TRUST 100W ET  
NJW P606 72N DAYDREAM 73S

HF 102S LARIAT 32X  
M-R 32X LAURA 83C  
M-R 236X MISS ZESTY 38Z

RRH MR FELT 3008  
KCF MISS 459 F284  
PW VICTOR BOOMER P606  
NJW 94J DEW 72N  
MHPH 13P STETSON 102S  
GHC MISS DELUXE 40P  
HF 83T SAMSON 236X  
MR MISS SANDSTAR 38T

B.WT.

103

SEPT 30

885

31

M-R 475Z STOCKBROKER 21H

HOMO POLLED | APKO 21H | FEB 1, 2020 | C03072274

TH 223 71I VICTOR 755T  
TH 89T 755T STOCKMAN 475Z  
TH 16G 20N GEMINI 89T

HF 503W KINGDOM 236Y  
M-R 236Y HUNTRESS 52E  
M-R 611Y STAN HUNTRESS 52B

DRF JWR PRINCE VICTOR 71I  
KBCR 19D DOMINETTE 223  
NPH 20X SPARTAN 20N  
TEE-JAY 707B GEMINI ET 16G

REMITALL ALLIANCE 503W  
HF 29F GOLDIE 36P  
BIG-GULLY 611 STAN HUNTER 611Y  
MR MISS 85L UNTOUCHABLE 15U

B.WT.

106

SEPT 30

808



APKO 21H

*Ranked*  
2ND AT WEANING  
1ST AT YEARLING

INDIVIDUAL INFORMATION

CALVING EASE	U
AGE OF DAM	3
GESTATION LENGTH	289

EXPECTED PROGENY DIFFERENCE

CE	BW	WW	YW	MILK	TM
-8.7	7.9	66	117.4	16.1	49.1

ULTRASOUND DATA

MARB	B.FAT	REA <sub>in</sub> <sup>^</sup>	%LMY
4.70	12.87	15.10	57.86



*Ranked*  
3RD AT YEARLING

INDIVIDUAL INFORMATION

CALVING EASE	U
AGE OF DAM	5
GESTATION LENGTH	279

EXPECTED PROGENY DIFFERENCE

CE	BW	WW	YW	MILK	TM
-3.3	4.6	56.6	99.8	25.9	25.9

ULTRASOUND DATA

MARB	B.FAT	REA <sub>in</sub> <sup>^</sup>	%LMY
4.20	10.00	12.06	58.33

APKO 24H

## 32 M-R 69E BANKROLL 24H

HOMO POLLED | APKO 24H | FEB 1, 2020 | C03072275

REMITALL-W 50 SHADES ET 12C  
HF 12C 50 SHADES BANKER 69E  
HF 29W UNIQUE LADY 93A

M-R 9050 INTERNATIONAL 1A  
M-R 1A INDEPENDENCE 32C  
M-R 100W ARIZONA 32A

BOYD BANKER 0015 ET  
REMITALL MARVEL 78T  
BBSF 101N WRANGLER 29W  
HF 36N SPLENDOR 93S

BOYD WORLDWIDE 9050 ET  
M-R 9W MISS YVES 22Y  
NJW 73S M326 TRUST 100W ET  
MR MISS 85L TIKI 32T

B.W.T.

94

SEPT 30

777

## 33 M-R 65E TRUMP 36H

POLLED | APKO 36H | FEB 8, 2020 | C03072280

SGC 100Z EASY STREET 33B  
FE 33B EASY STREET 65E  
SGC 76X ROBIN 56A

TLELL 57U CAN-DO 1Y  
M-R 1Y CANDY 18B  
M-R 812W MIZZ ZIPPY 12Z

WLB EASY STREET 90X 100Z  
SGC 76X XEMPT LASS 47Z  
BBSF W39 XEMPT 76X  
SGC 85U DREAM 23Y

RVP STAR 533P CAN-AM ET 57U  
TLELL 29F MISS CARLA ET 5W  
JNHR DANDY 812W  
M-R MISS RIBSTAR 12P

B.W.T.

104

SEPT 30

767

INDIVIDUAL INFORMATION

CALVING EASE	U
AGE OF DAM	6
GESTATION LENGTH	281

EXPECTED PROGENY DIFFERENCE

CE	BW	WW	YW	MILK	TM
-0.5	5.8	48.6	77.7	16	40.3

ULTRASOUND DATA

MARB	B.FAT	REA <sub>in</sub> <sup>^</sup>	%LMY
3.60	9.07	12.58	59.70



APKO 36H

INDIVIDUAL INFORMATION	
CALVING EASE	U
AGE OF DAM	3
GESTATION LENGTH	289

EXPECTED PROGENY DIFFERENCE						
CE	BW	WW	YW	MILK	TM	
-1.3	4.2	54	88.8	26.3	53.3	

ULTRASOUND DATA			
MARB	B.FAT	REA <sub>in</sub> <sup>^</sup>	%LMY
4.20	7.64	13.92	62.28



APKO 37H

34

## M-R 69E BOSS 37H

POLLED | APKO 37H | FEB 8, 2020 | C03072281

- REMITALL-W 50 SHADES ET 12C
- HF 12C 50 SHADES BANKER 69E
- HF 29W UNIQUE LADY 93A
- M-R 27A 403A POWERPLAY 4C
- M-R 4C POLLY 83E
- M-R 32X LAURA 83C

- BOYD BANKER 0015 ET
- REMITALL MARVEL 78T
- BBSF 101N WRANGLER 29W
- HF 36N SPLENDOR 93S
- WLB WINCHESTER POWERBALL 27A
- M-R 332W TOTAL ACCENT 403A
- HF 102S LARIAT 32X
- M-R 236X MISS ZESTY 38Z

B.WT.
91
SEPT 30
712

35

## M-R 225D BALBOA ET 42H

HORNED | APKO 42H | FEB 11, 2020 | C03072282

- NJW 73S W18 HOMETOWN 10Y ET
- MLL 10Y ROCKY ET 225D
- MJT MISS POLLY 125S
- HPH 145R AVATAR 5U
- MJT 151R AIMEE 454Y
- MJT 121K PRINCESS 151R

- SHF WONDER M326 W18 ET
- NJW P606 72N DAYDREAM 73S
- REMITALL PILGRIM 93P
- MJT MISS 7M MERLIN 225P
- GRANDVIEW 70AKS SONORA 145R
- ANL 4M AIMEE 5P
- JNHR SILVER STANDARD 396M
- VEDAN 77G SILVER LASS 121K

B.WT.
95
SEPT 30
689



APKO 42H

INDIVIDUAL INFORMATION	
CALVING EASE	U
AGE OF DAM	9
GESTATION LENGTH	281

EXPECTED PROGENY DIFFERENCE						
CE	BW	WW	YW	MILK	TM	
7.1	1.2	52.3	82.3	27.5	53.7	

ULTRASOUND DATA			
MARB	B.FAT	REA <sub>in</sub> <sup>^</sup>	%LMY
4.70	10.00	12.59	58.76



APKO 46H

Ranked  
3RD AT WEANING

INDIVIDUAL INFORMATION					
CALVING EASE					U
AGE OF DAM					3
GESTATION LENGTH					287
EXPECTED PROGENY DIFFERENCE					
CE	BW	WW	YW	MILK	TM
-6.9	4.9	56.8	90.1	27.7	56.1
ULTRASOUND DATA					
MARB	B.FAT	REA <sup>in</sup> <sub>a</sub>	%LMY		
3.80	7.14	14.90	63.56		

36 M-R 69E PAYDAY 46H

HOMO POLLED | APKO 46H | FEB 11, 2020 | C03072284

REMITALL-W 50 SHADES ET 12C  
HF 12C 50 SHADES BANKER 69E  
HF 29W UNIQUE LADY 93A  
XLP 75Z KELSEY 55B  
M-R 55B XYLA 50E  
MR MISS 45T XYLA 50X

BOYD BANKER 0015 ET  
REMITALL MARVEL 78T  
BBSF 101N WRANGLER 29W  
HF 36N SPLENDOR 93S  
ANL A XLP ACTION ET 75Z  
XLP 101S REESE 5Y  
HI-CLIFFE 1N TITAN 45T  
MR MISS 51P TILLY 50T

B.W.T.  
94  
SEPT 30  
781

37 M-R 118U WALKOFF ET 51H

POLLED | APKO 51H | FEB 14, 2020 | C03072556

BNMHPH 13P HEAT 101S  
MHPH 101S UMPIRE 118U  
MHPH MS 68M NITA 1112R  
HPH 145R AVATAR 5U  
MJT 151R AIMEE 454Y  
MJT 121K PRINCESS 151R

REMITALL PATRIOT ET 13P  
ANL PBG 29F BONNIE 21P  
STAR AMERICA BNMHPH SS MKS 68M  
MHPH MS 29F NITA 112L  
GRANDVIEW 70AKS SONORA 145R  
ANL 4M AIMEE 5P  
JNHR SILVER STANDARD 396M  
VEDAN 77G SILVER LASS 121K

B.W.T.  
107  
SEPT 30  
718

INDIVIDUAL INFORMATION						
CALVING EASE					U	
AGE OF DAM					9	
GESTATION LENGTH					283	

EXPECTED PROGENY DIFFERENCE						
CE	BW	WW	YW	MILK	TM	
-0.6	4.4	61.2	102.3	23.7	54.3	

ULTRASOUND DATA						
MARB	B.FAT	REA <sub>in</sub> <sup>^</sup>	%LMY			
4.00	7.17	12.72	61.75			



APKO 51H

#### INDIVIDUAL INFORMATION

CALVING EASE	U
AGE OF DAM	3
GESTATION LENGTH	288

#### EXPECTED PROGENY DIFFERENCE

CE	BW	WW	YW	MILK	TM
-7.5	6.0	55.3	92	20.5	48.2

#### ULTRASOUND DATA

MARB	B.FAT	REA <sub>in</sub> <sup>^</sup>	%LMY
4.50	8.12	11.95	60.16



**APKO 63H**

**38**

**M-R 69E HURLEY 63H**

POLLED | APKO 63H | FEB 16, 2020 | C03072290

REMITALL-W 50 SHADES ET 12C  
**HF 12C 50 SHADES BANKER 69E**  
 HF 29W UNIQUE LADY 93A

XLP 75Z KELSEY 55B  
**M-R 55B EXTRA 79E**  
 MR MISS 45T XTRA 79X

BOYD BANKER 0015 ET  
 REMITALL MARVEL 78T  
 BBSF 101N WRANGLER 29W  
 HF 36N SPLENDOR 93S  
 ANL A XLP ACTION ET 75Z  
 XLP 101S REESE 5Y  
 HI-CLIFFE 1N TITAN 45T  
 MR MISS SANDSTAR 77S

B.WT.
101
SEPT 30
729

**39**

**M-R 374E TONTO 66H**

POLLED | APKO 66H | FEB 17, 2020 | C03072292

BAR-RZ 8Y CARTER 8C  
**JNHR PACER 374E**  
 JNHR SUSIE 277C

WLB WINCHESTER POWERBALL 27A  
**M-R 27A POLLY 455D**  
 M-R 236Y KIMBERLY 454B

NJW 73S W18 HOMEGROWN 8Y ET  
 BAR-RZ 32J PACEY 66P  
 JNHR ABSOLUTE 180A  
 JNHR TINA 100A  
 WLB LEGO 83T 90X  
 WLB 503W ALICE ET 8401Y  
 HF 503W KINGDOM 236Y  
 MJT 151R AIMEE 454Y

B.WT.
98
SEPT 30
737



**APKO 66H**

#### INDIVIDUAL INFORMATION

CALVING EASE	U
AGE OF DAM	4
GESTATION LENGTH	286

#### EXPECTED PROGENY DIFFERENCE

CE	BW	WW	YW	MILK	TM
3.4	2.5	45.4	66.9	27.4	50.1

#### ULTRASOUND DATA

MARB	B.FAT	REA <sub>in</sub> <sup>^</sup>	%LMY
5.20	9.54	11.51	58.35



APKO 69H

Ranked  
2ND AT YEARLING

INDIVIDUAL INFORMATION	
CALVING EASE	U
AGE OF DAM	2
GESTATION LENGTH	N/A

EXPECTED PROGENY DIFFERENCE					
CE	BW	WW	YW	MILK	TM
8.9	2.0	57.2	101.1	24.2	52.8

ULTRASOUND DATA			
MARB	B.FAT	REA <sub>in</sub> <sup>^</sup>	%LMY
4.50	13.82	13.66	55.72

40 M-R 1D CAPTAIN 69H  
HOMO POLLED | APKO 69H | FEB 21, 2020 | C03072293

- CHSF 10Y HARLEY 16B  
CHSF 16B WOODFORD 1D  
CHSF 49X LADY WOODFORD 23A
- HAROLDSONS DELTA ET 69A  
WCC 21B JESSICA 821F  
ANL DF 521X ERIN 16Z 21B

- NJW 73S W18 HOMETOWN 10Y ET  
CHSF 52U LADY HOPE 6X  
CHSF 28T WATSON 49X  
CHSF 52U WOODFORD 16X
- HAROLDSON'S WLL ANCHOR 4T  
TL 5073 JESSICA 751U  
TH 122 71I VICTOR 521X ET  
HAROLDSONS ERIN 425X 16Z

B.WT.
83
SEPT 30
678

41 M-R 65E BIG TIME 70H  
POLLED | APKO 70H | FEB 21, 2020 | C03072294

- SGC 100Z EASY STREET 33B  
FE 33B EASY STREET 65E  
SGC 76X ROBIN 56A
- GRLZ KINGPIN 73A  
M-R 73A KENSIE 35D  
M-R 236X MISS ZEN 32Z

- WLB EASY STREET 90X 100Z  
SGC 76X XEMPT LASS 47Z  
BBSF W39 XEMPT 76X  
SGC 85U DREAM 23Y
- HF 503W KINGDOM 236Y  
MR MISS 85L UPTOWN GIRL 73U  
HF 83T SAMSON 236X  
MR MISS 85L TIKI 32T

B.WT.
96
SEPT 30
718

INDIVIDUAL INFORMATION	
CALVING EASE	U
AGE OF DAM	4
GESTATION LENGTH	282

EXPECTED PROGENY DIFFERENCE					
CE	BW	WW	YW	MILK	TM
1.8	4.2	42.9	67	19.8	41.3

ULTRASOUND DATA			
MARB	B.FAT	REA <sub>in</sub> <sup>^</sup>	%LMY
4.10	8.59	15.42	62.49



APKO 70H

# REFERENCE SIRE S



WALKING SIRE

## HF 12C 50 SHADES BANKER 69E

POLLED | ALWI 69E | FEB 22, 2017 | C03038179

BOYD BANKER 0015 ET  
REMITALL-W 50 SHADES ET 12C  
REMITALL MARVEL 78T

BBSF 101N WRANGLER 29W  
HF 29W UNIQUE LADY 93A  
HF 36N SPLENDOR 93S

CE	BW	WW	YW	MILK	TM
-12.7	6.8	62.9	110	28.7	60.2

- calves are vigorous at birth
- progeny are eye appealing and hairy
- our most consistent sire group



WALKING SIRE

## FE 33B EASY STREET 65E

POLLED | FHR 65E | APRIL 14, 2017 | C03038094

WLB EASY STREET 90X 100Z  
SGC 100Z EASY STREET 33B  
SGC 76X XEMPT LASS 47Z

BBSF W39 XEMPT 76X  
SGC 76X ROBIN 56A  
SGC 85U DREAM 23Y

CE	BW	WW	YW	MILK	TM
3.9	5.2	44.3	74.7	18.9	41.1

- calves are vigorous at birth
- offspring are high performing from birth to yearling
- daughters in production are highly maternal with good udders



AI SIRE

## MHPH 101S UMPIRE 118U

POLLED | MHPH 118U | JAN 18, 2008 | C02909473

REMITALL PATRIOT ET 13P  
BNMHPH 13P HEAT 101S  
ANL PBG 29F BONNIE 21P

STAR AMERICA BNMHPH SS MKS 68M  
MHPH MS 68M NITA 1112R  
MHPH MS 29F NITA 112L

CE	BW	WW	YW	MILK	TM
-1.7	3.7	50.3	81.4	21	46.2

- exceptional maternal strength
- high performing from birth to yearling



AI SIRE

## TH 89T 755T STOCKMAN 475Z

POLLED | 475Z | MARCH 14, 2012 | C02991023

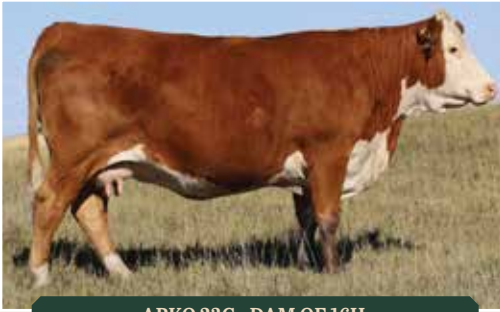
DRF JWR PRINCE VICTOR 71I  
TH 223 71I VICTOR 755T  
KBCR 19D DOMINETTE 223

NPH 20X SPARTAN 20N  
TH 16G 20N GEMINI 89T  
TEE-JAY 707B GEMINI ET 16G

CE	BW	WW	YW	MILK	TM
-10.0	7.5	69.4	118.3	6.3	41

- exceptional structure and overall design
- high performance from birth to yearling

# REFERENCE DAMS



APKO 23C - DAM OF 16H



MJT 454Y - DAM OF 42H & 51H



APKO 455D - DAM OF 66H



APKO 83E - DAM OF 37H



APKO 52E - DAM OF 21H



# marketa-BULL

Hereford crosses are one of the most recognizable and marketable animals in the industry. Whether you sell baldie replacements or baldie feeder calves, adding a Hereford bull to your crossbreeding program will increase performance through heterosis and add docility and feed-efficiency to your calves - improving profitability by \$51 per cow per year.

**7%**  
Higher pregnancy rates

**\$51**  
More Per Cow, Per Year

**\$20**  
Advantage in Feed Efficiency

**\$30**  
Advantage in Feedlot Profitability

\*Compared to Angus-sired calves. Source: Daley, David A. and Early, Sean P.  
Impacts of Crossbreeding on Profitability in Vertically Coordinated Beef Industry Marketing Systems. American Hereford Association.

TERRI MAPPIN M PHOTOGRAPHY



The background of the entire page is a photograph of two men in silhouette, wearing baseball caps and shaking hands. They are standing in a field of tall grass, and the sun is setting directly between them, creating a bright, warm glow. The sky is a mix of orange and yellow, and the overall mood is one of partnership and hope.

# HELP THE YORKTON EX TODAY

The Yorkton Exhibition's motto is "bringing friends and neighbours together" and unfortunately due to the circumstances we have not been able to hold events and come together as we have in the past, but we are optimistic for the future and look forward to once again hosting all of your event favorites and more, but we need a little help to get us there.

We are currently accepting donations through our Grain Drive or to show your support for the Yorkton Exhibition Association please contact any Yorkton Exhibition Director or call the Yorkton Exhibition Office at **(306) 783-4800**.

We truly appreciate your support and look forward to seeing you again at future events!!

Cash donations are also appreciated and can be made by etransfer, over the phone or online through our website at  
**[www.yorktonexhibition.com](http://www.yorktonexhibition.com)**.

# CANADA SweetPro®

## PREMIUM SUPPLEMENTS



ONE TON OF SWEETPRO WILL BE AUCTIONED OFF  
LIVE AT THE SALE AND THE PROCEEDS WILL BE  
DONATED TO THE YORKTON REGIONAL 4-H.

### GUARANTEED ANALYSIS

NUTRIENT	STARTER	CATTLE HANDI	SWEETPRO 15	FIBERMATE 18	SUPER 25	MAGNUM
PROTEIN	14%	18%	16%	18%	20%	20%
CPM	100%	100%	100%	100%	100%	100%
FAAT	0.0%	0.0%	0.0%	0.0%	0.0%	0.0%
CHUG FREE	0.0%	0.0%	0.0%	0.0%	0.0%	0.0%
CALCIUM	1%	1.2%	1.2%	1.2%	1.2%	1.2%
CALCIUM	1%	1.2%	1.2%	1.2%	1.2%	1.2%
PHOSPHORUS	1%	1%	1.2%	1.2%	1.2%	1.2%
SALT	7.4%	7.4%	10%	10%	10%	10%
SALT	8.7%	8.7%	10%	10%	10%	10%
MAGNESIUM	1%	1%	1.2%	1.2%	1.2%	1.2%
POTASSIUM	0.4%	0.4%	0.4%	0.4%	0.4%	0.4%
SULFUR	0.2%	0.2%	0.2%	0.2%	0.2%	0.2%
COPPER	800	800	800	800	800	800
SELENIUM	5	5	5	5	5	5
CORAL	8	8	8	8	8	8
ZINC	1,000	1,000	1,000	1,000	1,000	1,000
MANGANESE	750	750	750	750	750	750
IRON	5	5	5	5	5	5
VITAMIN A	80,000	80,000	80,000	80,000	80,000	80,000
VITAMIN D	4,000	4,000	4,000	4,000	4,000	4,000
VITAMIN E	100	100	100	100	100	100

**Broad Amino Acid Profile**

**Organically-Complexed  
Minerals**

**Cost-Effective Results**

**Forage Savings**

**Herd Health**

**Higher Weaning Weights**

**Excellent Conception Rates**

**The Right Ingredients in The Right Block**

# CANADA SweetPro®

PREMIUM SUPPLEMENTS

**nutrition  
partners**



WWW.SWEETPRO.COM/FIND-A-DEALER

CLAYTON HAWRELUK

306.621.3824

C.HAWRELUK@GMAIL.COM

*It pays to buy a Charolais bull from Saskatchewan...*

**PURCHASE A CHAROLAIS BULL**  
from a Saskatchewan Charolais Member  
and you could be rewarded with

**\$2000**

For every bull you purchase and their registration papers transferred by August 31, 2021, you will have your name entered in the draw. Open to all 2021 bull customers of Saskatchewan Charolais Association members. You can purchase your bull through a sale or privately.

*Sponsored by the Saskatchewan Charolais Association*



## *What do the numbers mean?*

### EPD'S EXPLAINED

**BW EPD** (BIRTH WEIGHT): Describes genetic differences for progeny birth weight. A larger number indicates heavier calves at birth.

**WW EPD** (WEANING WEIGHT): Genetics difference for progeny weaning weight. A larger number indicated heavier calves at weaning.

**YW EPD** (YEARLING WEIGHT): Genetic difference for progeny yearling weight. A larger number indicates heavier calves at one year of age.

**MILK EPD**: Genetic difference for daughters' progeny weaning weight due to their milk production (grand progeny). A larger number indicates heavier calves from daughters at weaning.

**TM EPD** (TOTAL MATERNAL): Genetic difference for daughters' progeny weaning weight due to their genes for milk and growth (grand progeny) A larger number indicates heavier calves at weaning.

### CARCASS DATA EXPLAINED

**REAin<sup>^</sup>** (RIB-EYE AREA): Genetic difference for progeny rib-eye area in square inches. A larger number indicates bigger rib-eye muscle.

**B. FAT** (FAT THICKNESS): Genetic difference for progeny backfat thickness at 12/13 rib. A larger value indicates fatter carcasses.

**MARB** (MARBLING): Genetic difference for progeny marbling score in marbling score units. A larger number indicates more marbling.

**%LMY** (LEAN YIELD): Genetic difference for progeny lean meat yield. A larger number indicates more lean meat in the carcass and more yield grade 1 carcasses.

### THE PERCENTAGE CALVING CHART

1. In any breed, the average beef cow should calve 7% of her body weight.
2. Charolais and Hereford cows weigh on average between 1200-1800 lbs. Expect a calf birth weight between 98 and 126 lbs.
3. Calving ease is MORE important than birth weight. A longer calf will calve easy but the extra length of body will add birth weight.

### CALVING EASE RATING

**U**: Unassisted birth

**EA**: Easy Assist

### AVERAGE GESTATION LENGTH

**CHAROLAIS**: 286 days

**HEREFORDS**: 285 days

canadian charolais breed average epds  
bw0.8 ww44.5 yw85.7 m21.3 tm43.5

canadian hereford breed average epds  
ce2.4 bw2.9 ww52.3 yw84.2 m24.4 tm50.5

## *Thank you to our 2020 buyers.... we appreciate you!*

**Terms:** The terms of the sale are cash or cheque payable immediately after the sale in Canadian funds. All settlements must be made with the sale clerks before cattle will be released. The right of property will not pass until final payment is made.

**Bidding:** Each animal will sell to the highest bidder. Bidders unable to attend the sale may phone their bids and instructions to the sale manager, auctioneer or special representatives. Bids must be received in sufficient time prior to the sale.

**Disputes:** Bidding will be reopened between the parties involved. If no further bid is made, the buyer will be the person from whom the auctioneer accepted the last bid. The auctioneer's decision is final.

**Announcements:** Announcements made from the auction block will take precedence over printed matter in the catalogue. Buyers are cautioned to pay close at-

tention to announcements.

**Purchaser's Risk:** Each animal becomes the risk of the purchaser as soon as sold. Animals will be cared for at the purchaser's risk for a reasonable length of time. All animals left with the seller must be insured.

**Certificate of Registration:** Each animal will carry papers issued by the appropriate breed association. A certificate of registry duly transferred will be furnished to the buyer after payment has been made.

**Delivery:** Assistance will be given in making delivery after the sale. The purchaser agrees shipping arrangements will be at the convenience of the seller, but will be as soon as practical after the sale, at the buyer's risk.

**Breeder Guarantee:** Should any bull fourteen months of age or over, fail to prove a breeder after being used on cows known to be breeders, the matter shall be reported in writing to the seller within six months fol-

lowing the date of the purchase or six months after the bull has reached fourteen months of age. The seller has the right and privilege of six months to prove the bull a breeder. No guarantee is given that semen collected from the bull will freeze.

**Exception Guarantee:** In the case where the animal is subjected to any hormonal or surgical reproductive techniques after the sale, this guarantee shall be null and void. The seller is not responsible for damage caused by foreign bodies after the animal has been sold or for sickness not apparent at sale time. In no event shall the seller be responsible for more than the purchase price.

**Accidents:** Although every precaution will be taken to protect the safety and comfort of buyers, neither the sale manager, auctioneer, or sellers assume any responsibility and disclaim any liability, legal or otherwise, in the event of accident or loss of property.



SLIDING HILLS CHAROLAIS  
PO Box 1809  
Canora, SK S0A 0L0



RETURN POSTAGE GUARANTEED  
PORT DE RETOUR GARANTI

Time Sensitive Material



  
**SLIDING HILLS**  
CHAROLAIS  
WITH  
**MISSION RIDGE**  
HEREFORDS  
15TH ANNUAL BULL SALE

2:00PM, SATURDAY, MARCH 20, 2021 • CANORA, SK

